

SERVICE MANUAL

HIGH POWER MULTI
AIR CONDITIONER
WALL MOUNTED type



Models	Indoor unit	Outdoor unit
	ASY9EMACW	AOY19ESAM2
	ASY12EMACW	AOY24ESAM2
	ASH9EMACW	AOH19ESAM2
	ASH12EMACW	AOH24ESAM2

C O N T E N T S

SPECIFICATIONS	1
OUTLINE AND DIMENSIONS	2
REFRIGERANT SYSTEM DIAGRAM	3
ERROR DISPLAY	4
CIRCUIT DIAGRAM	5
INDOOR PRINTED CIRCUIT BOARD CIRCUIT DIAGRAM	6
DISASSEMBLY ILLUSTRATION	7
PARTS LIST	13
STANDARD ACCESSORIES	15

S P E C I F I C A T I O N S

TYPE	COOL			
OPERATION	1 UNIT	2 UNITS	1 UNIT	2 UNITS
INDOOR UNIT	ASY9EMACW, ASH9EMACW		ASY12EMACW, ASH12EMACW	
OUTDOOR UNIT	AOY19ESAM2, AOH19ESAM2		AOY24ESAM2, AOH12ESAM2	
COOLING CAPACITY (kW)	2.65 - 2.70	5.30 - 5.40	3.45 - 3.50	6.90 - 7.00

ELECTRICAL DATA

POWER SOURCE (V)	220 - 240			
FREQUENCY (Hz)	50			
RUNNING CURRENT (A)	4.9 - 4.9	9.3 - 9.3	6.62 - 6.76	12.6 - 12.8
INPUT WATTS (kW)	1.05 - 1.11	2.00 - 2.10	1.37 - 1.45	2.67 - 2.76
EER (kW/kW)	2.52 - 2.43	2.65 - 2.57	2.52 - 2.41	2.58 - 2.54
MOISTURE REMOVAL (ℓ/hr)	1.0	2.0	1.6	3.2
AIR CIRCULATION-HI (m ³ /hr)	465		500	

COMPRESSOR

TYPE	Hermetic type, Permanent split condenser, 2 pole, Single phase, Induction motor		
CODE	[802 283 45 220 - 240V 50Hz]	[802 356 45E 220 - 240V 50Hz]	
REFRIGERANT R-407C (g)	950 x 2	1,050 x 2	

FAN MOTOR

POWER SOURCE (V)	240		
INDOOR UNIT	HI-SPEED (r.p.m.)	1,265	1,330
	MED-SPEED (r.p.m.)	1,155	1,260
	LO-SPEED (r.p.m.)	1,060	1,190
	QUIET (r.p.m.)	960	1,100
OUTDOOR UNIT (r.p.m.)	720		

DIMENSIONS

INDOOR UNIT	H x W x D (mm)	260 x 815 x 175
OUTDOOR UNIT		700 x 900 x 350

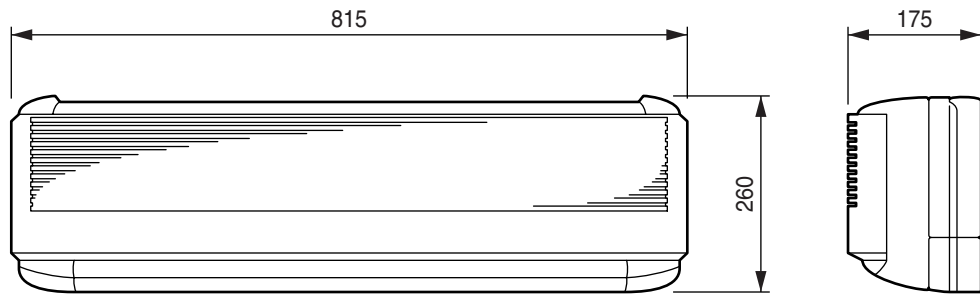
WEIGHT

INDOOR UNIT	GROSS / NET (kg)	10 / 8	
OUTDOOR UNIT		86 / 74	85 / 73

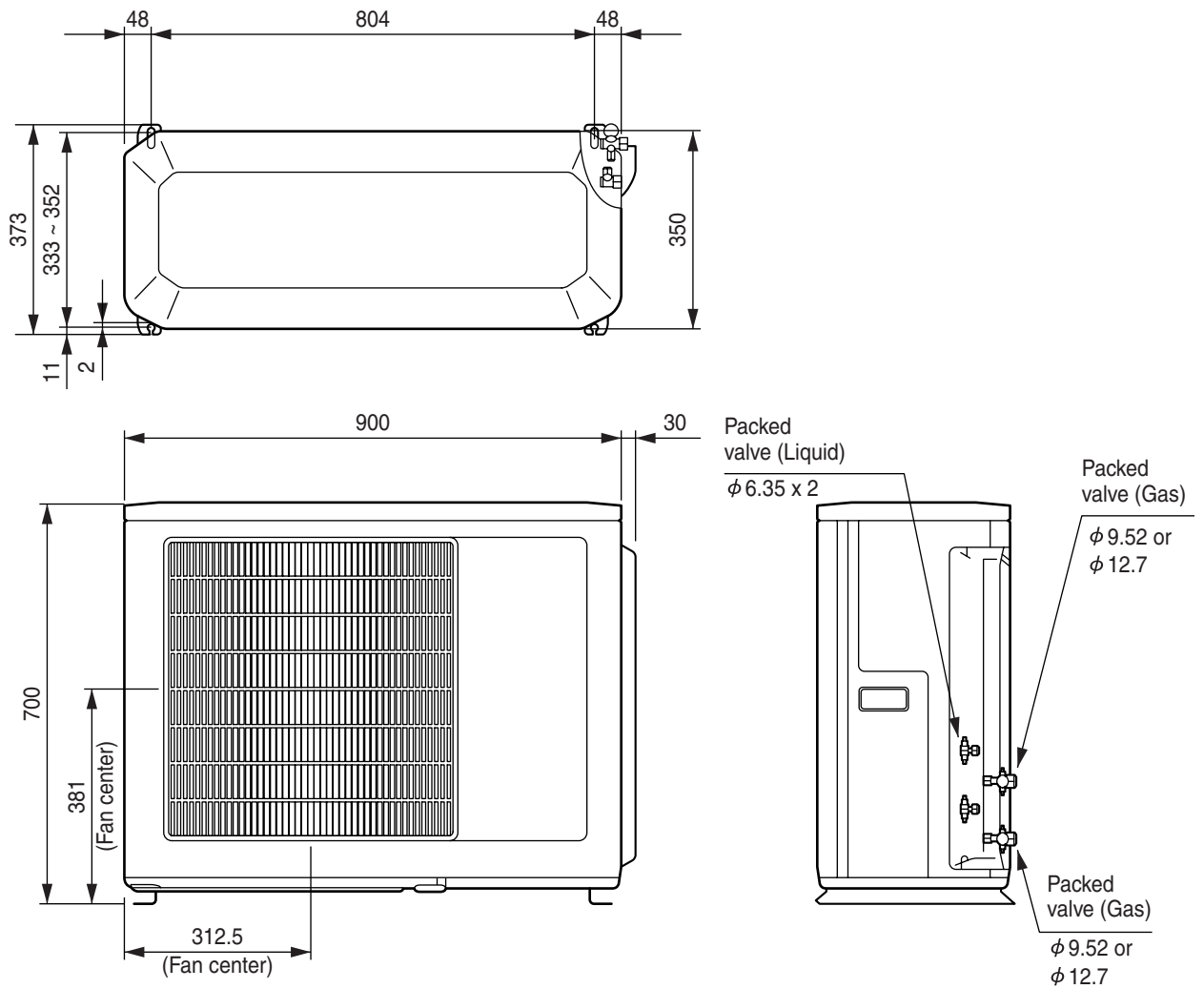
OUTLINE AND DIMENSIONS

(Unit : mm)

INDOOR UNIT (WALL MOUNTED type)

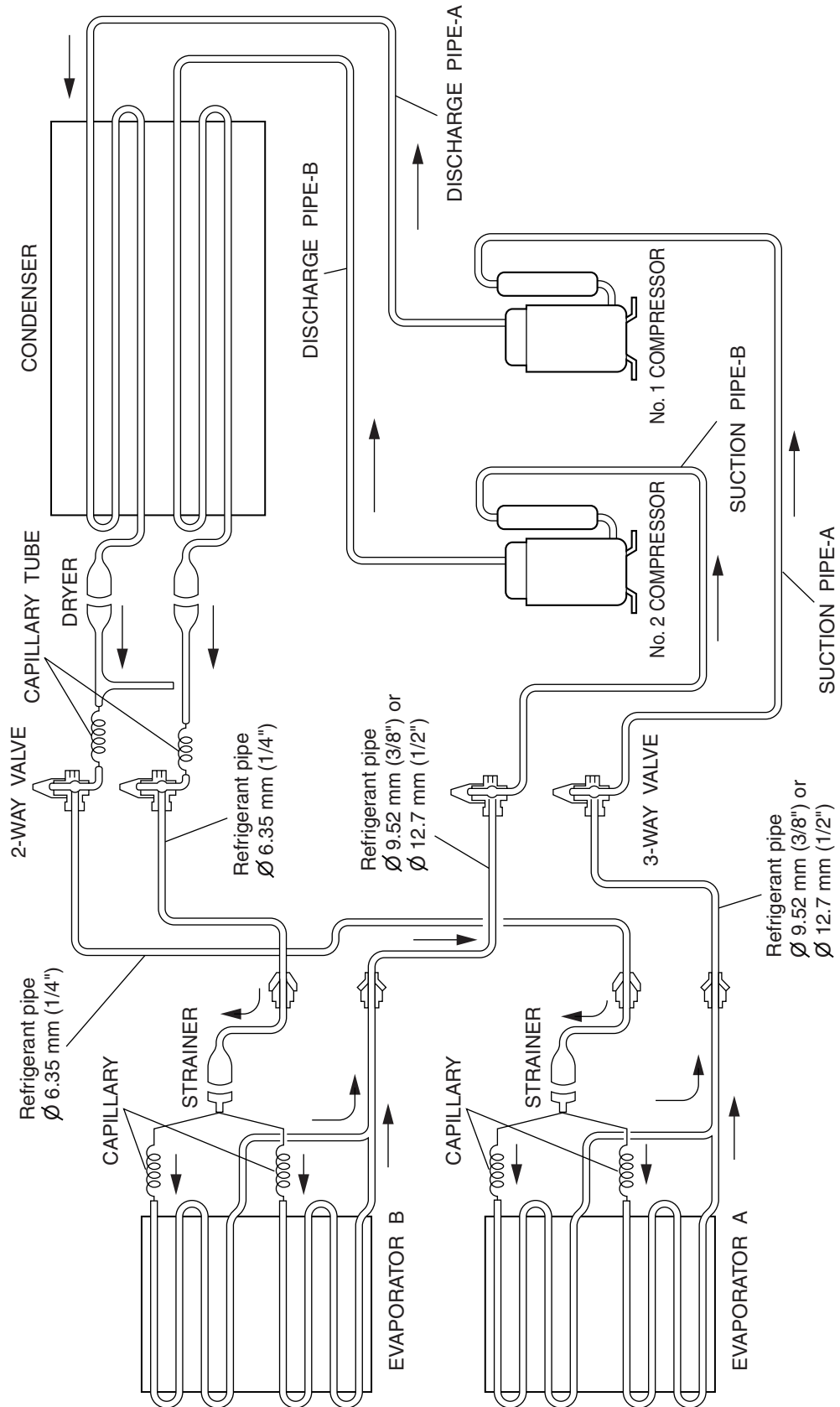


OUTDOOR UNIT



REFRIGERANT SYSTEM DIAGRAM

Models : ASY9EMACW x 2 / AOY19ESAM2
 ASY12EMACW x 2 / AOY24ESAM2
 ASH9EMACW x 2 / AOH19ESAM2
 ASH12EMACW x 2 / AOH24ESAM2



ERROR DISPLAY

INDOOR UNIT

○: Fast flashing ●: Slow flashing — : Off

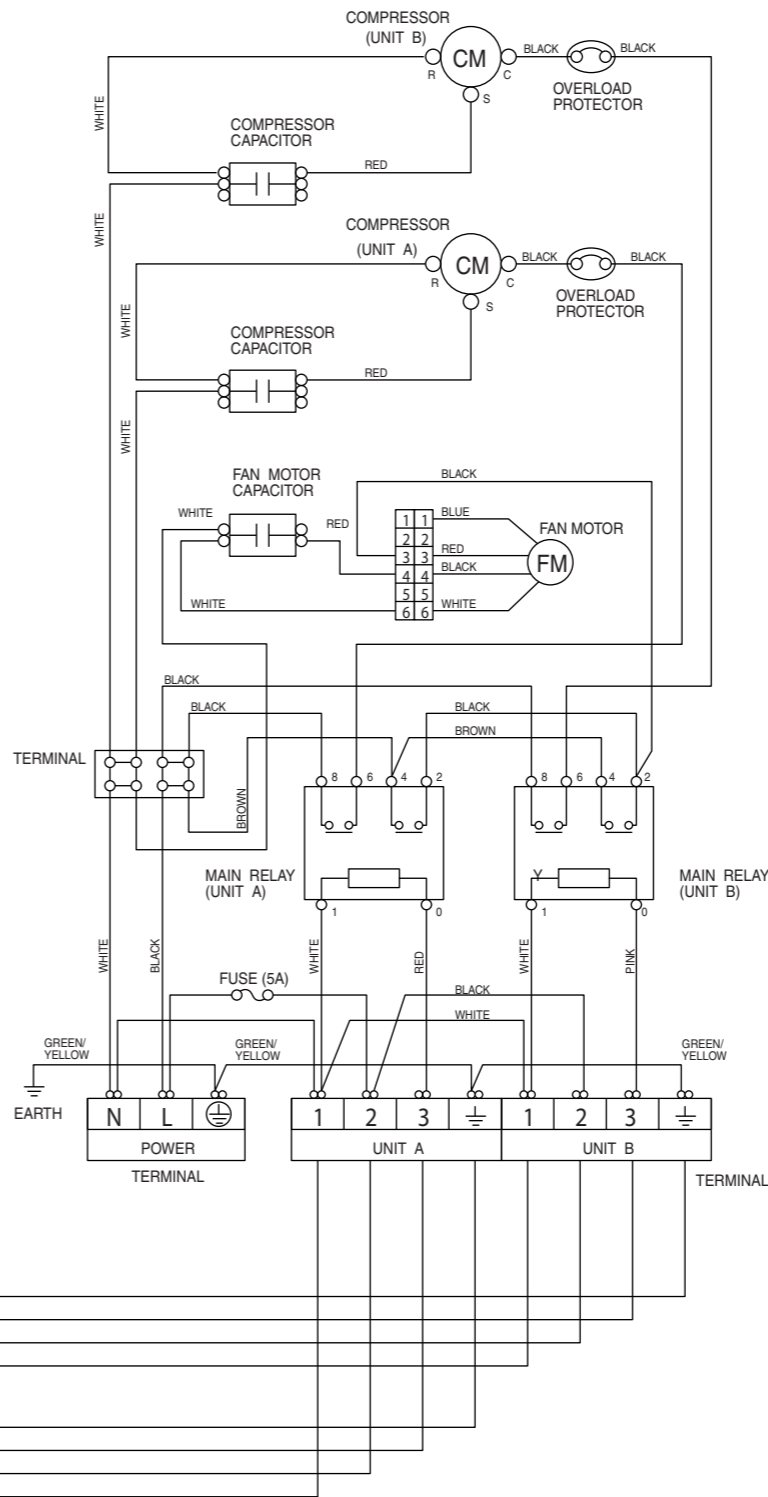
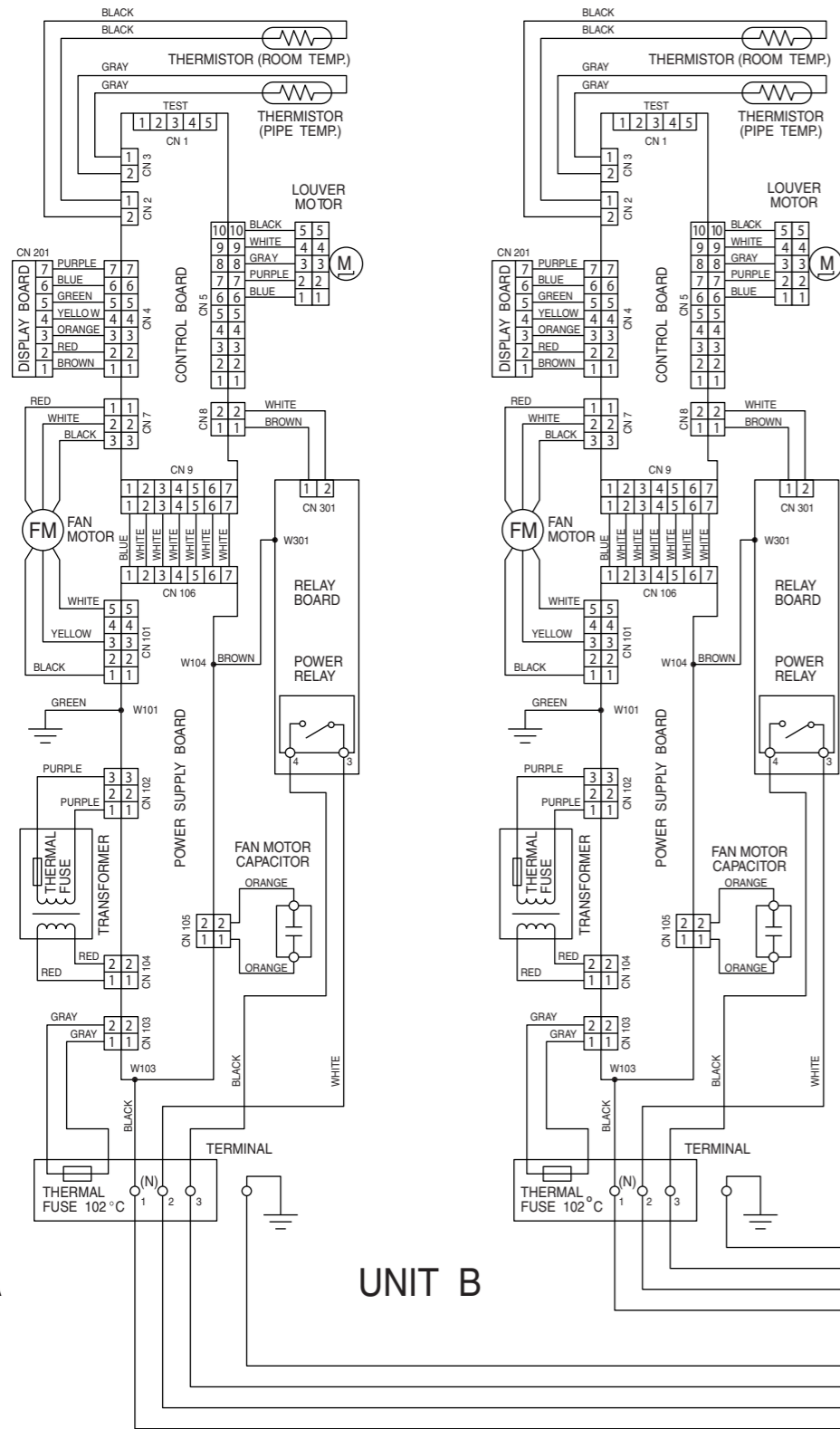
Error contents	ERROR DISPLAY		
	OPERATION (RED)	TIMER (GREEN)	SWING (ORANGE)
Indoor unit circuit board error	○	○	---
Indoor unit room temperature sensor wire error	● (2 times)	○	---
Indoor unit piping sensor wire error	● (3 times)	○	---
Indoor unit Fan motor error	● (6 times)	○	---

CIRCUIT DIAGRAM

Models : ASY9EMACW x 2 / AOY19ESAM2
ASY12EMACW x 2 / AOY24ESAM2
ASH9EMACW x 2 / AOH19ESAM2
ASH12EMACW x 2 / AOH24ESAM2

INDOOR UNIT

OUTDOOR UNIT

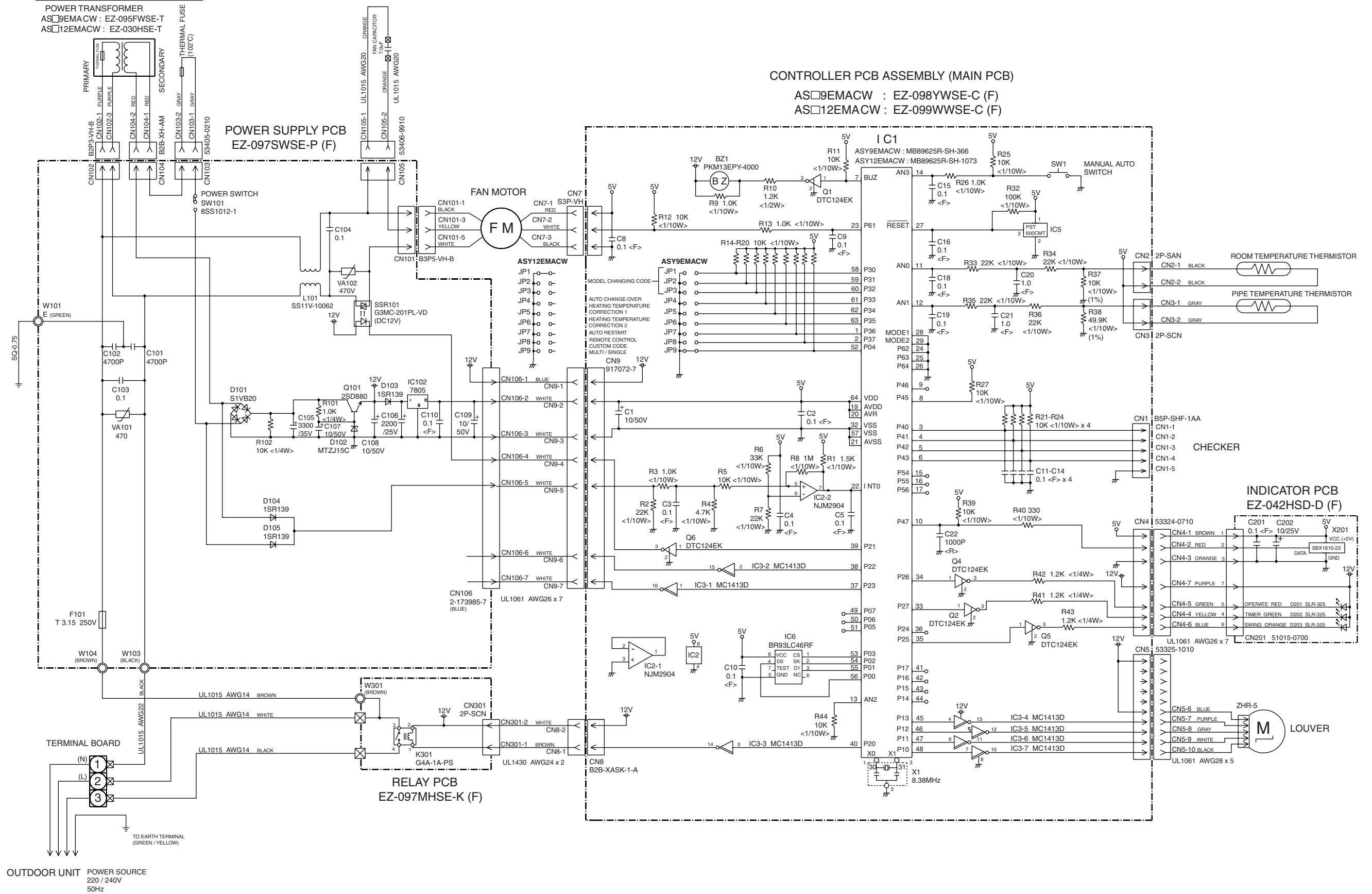


UNIT A

UNIT B

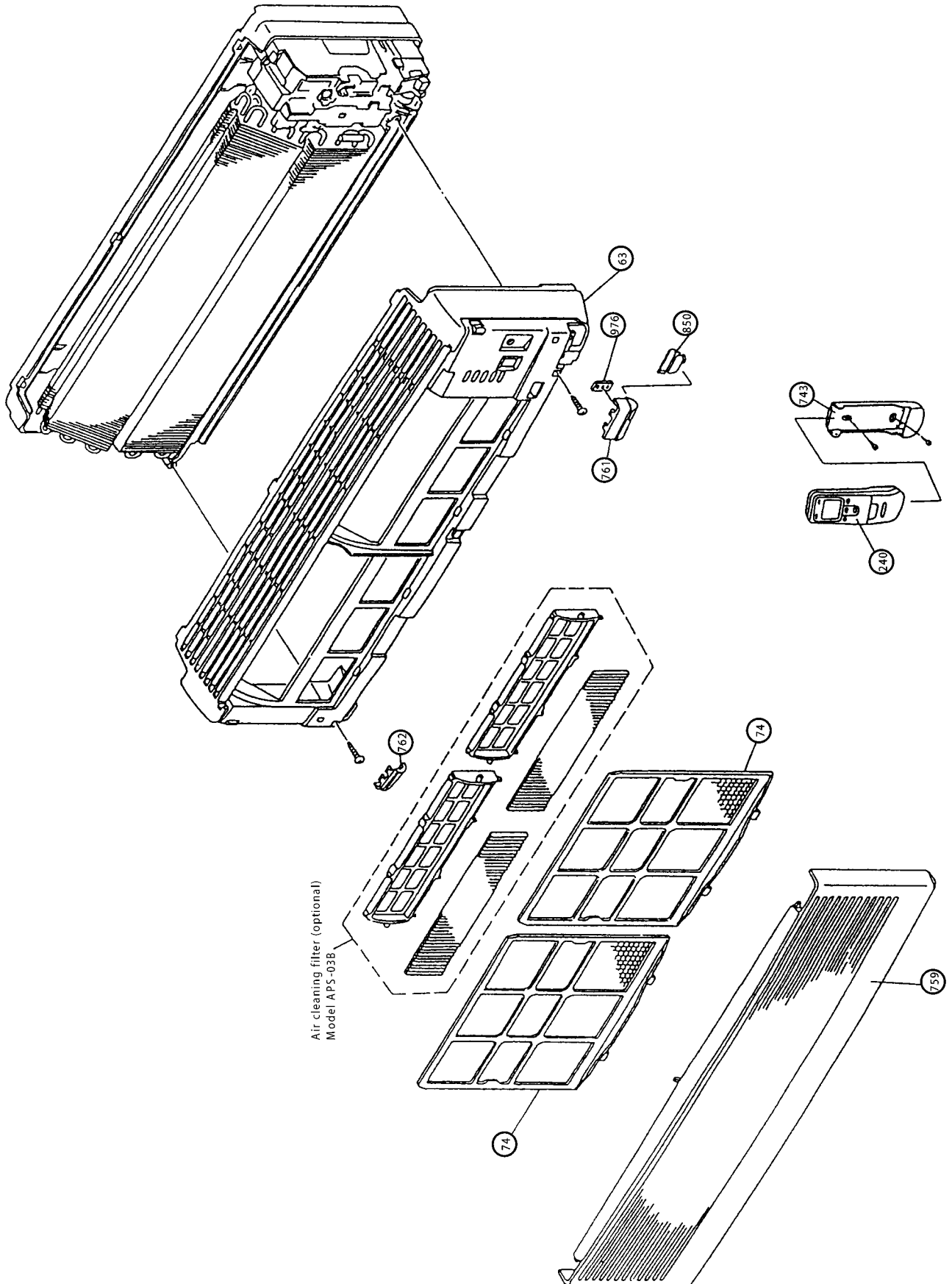
INDOOR PRINTED CIRCUIT BOARD CIRCUIT DIAGRAM

**Models : ASY9EMACW
ASY12EMACW
ASH9EMACW
ASH12EMACW**

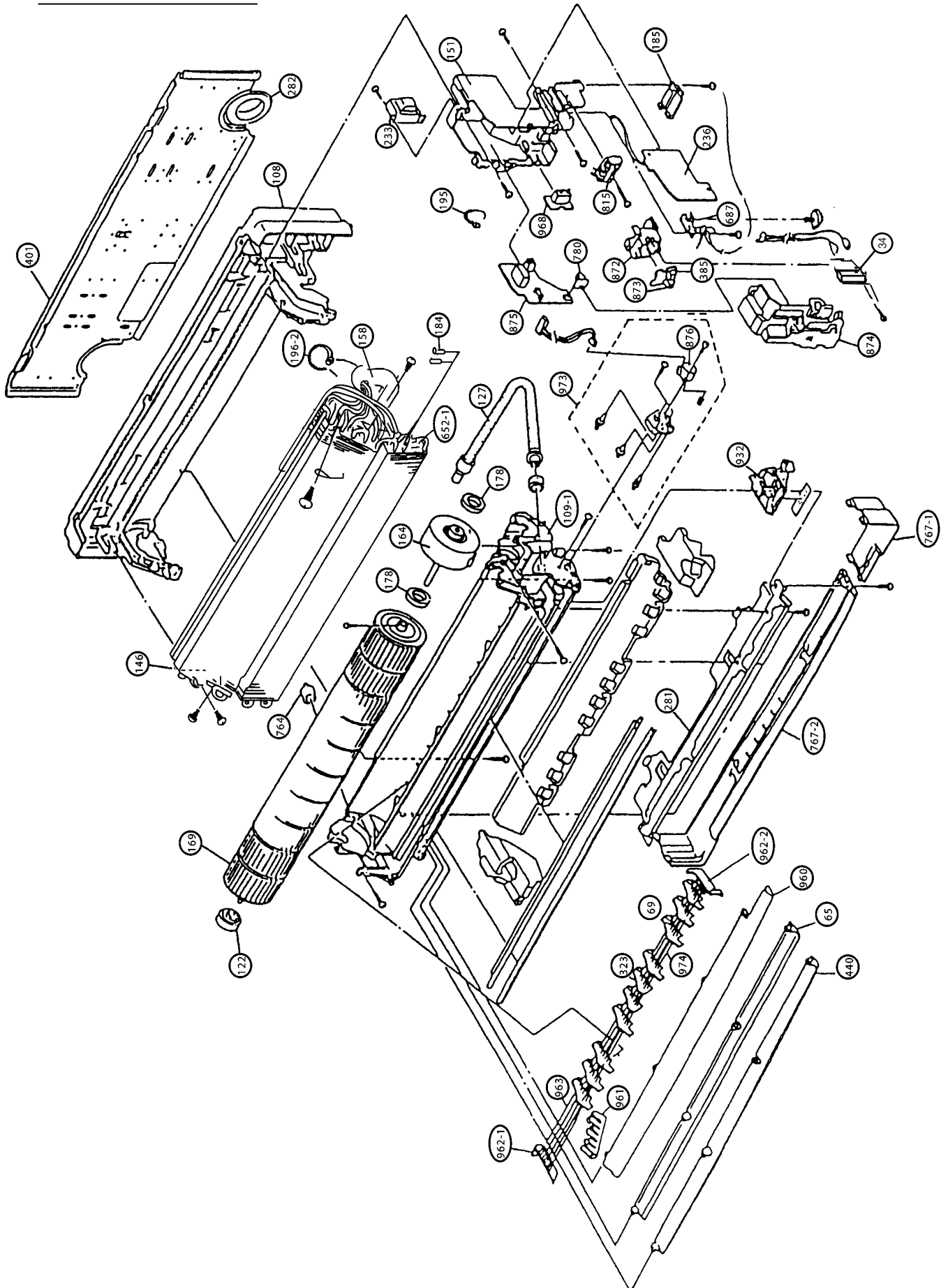


DISASSEMBLY ILLUSTRATION

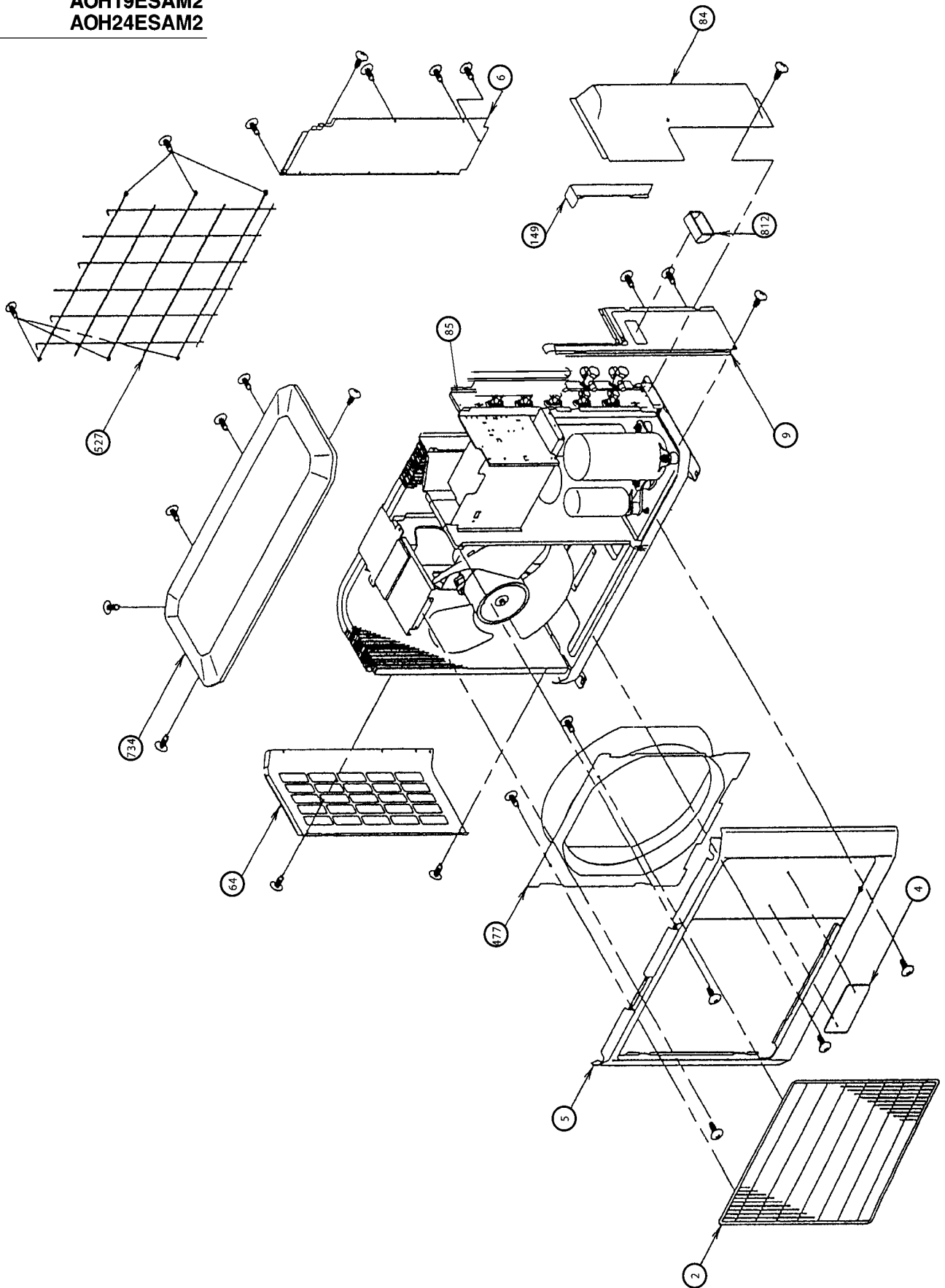
Models : ASY9EMACW
ASY12EMACW
ASH9EMACW
ASH12EMACW



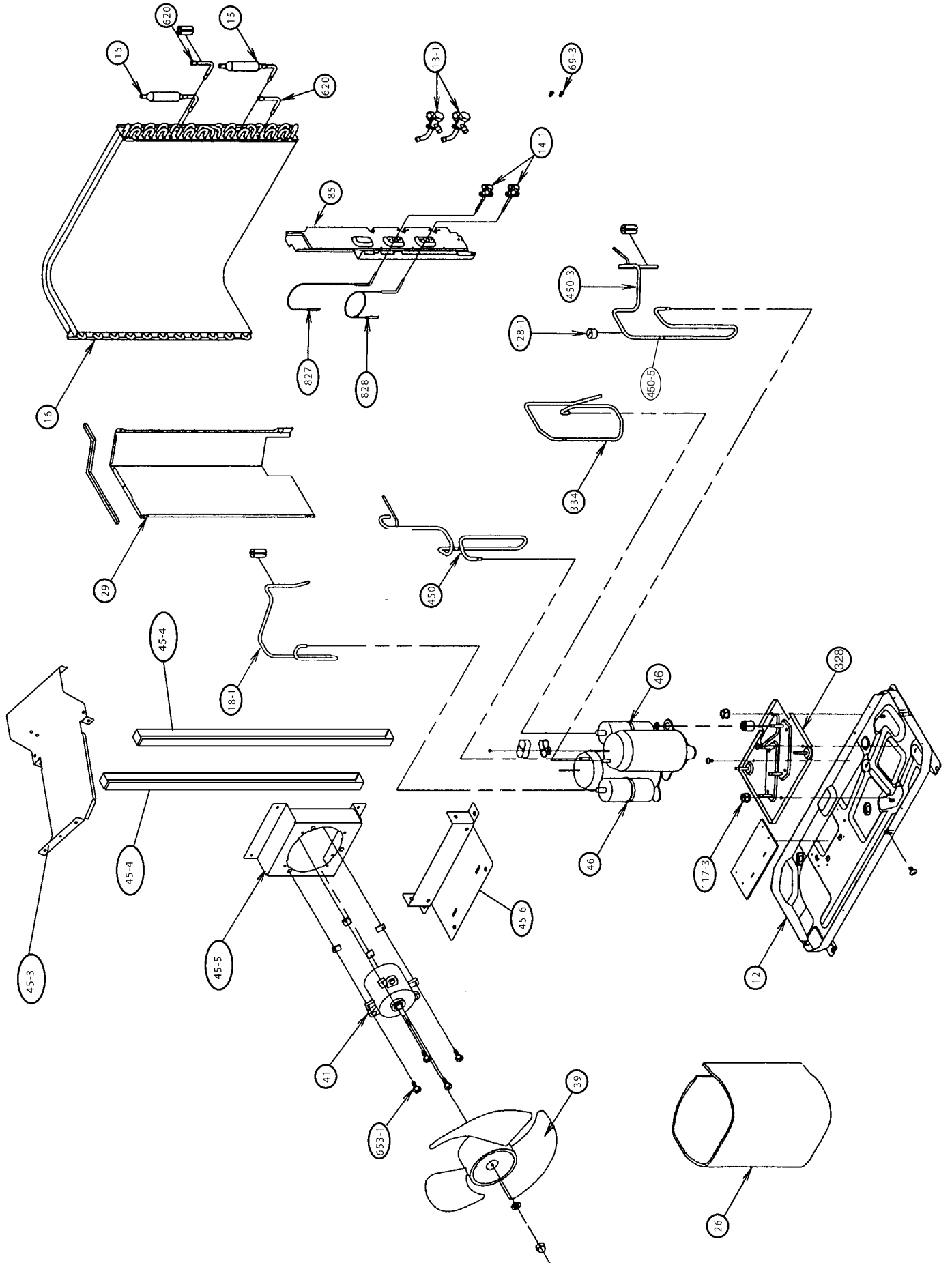
Models : ASY9EMACW
 ASY12EMACW
 ASH9EMACW
 ASH12EMACW



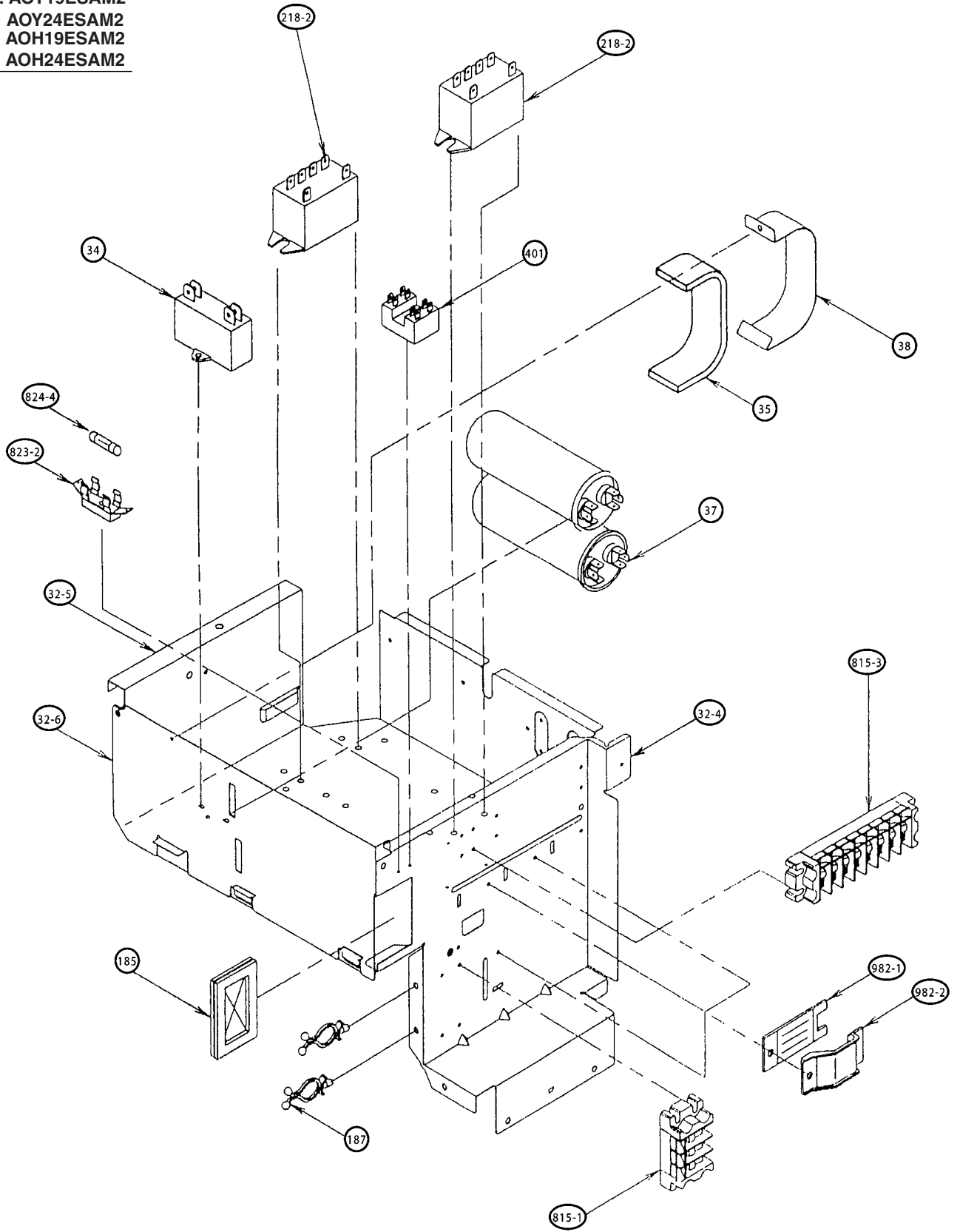
Models : AOY19ESAM2
AOY24ESAM2
AOH19ESAM2
AOH24ESAM2



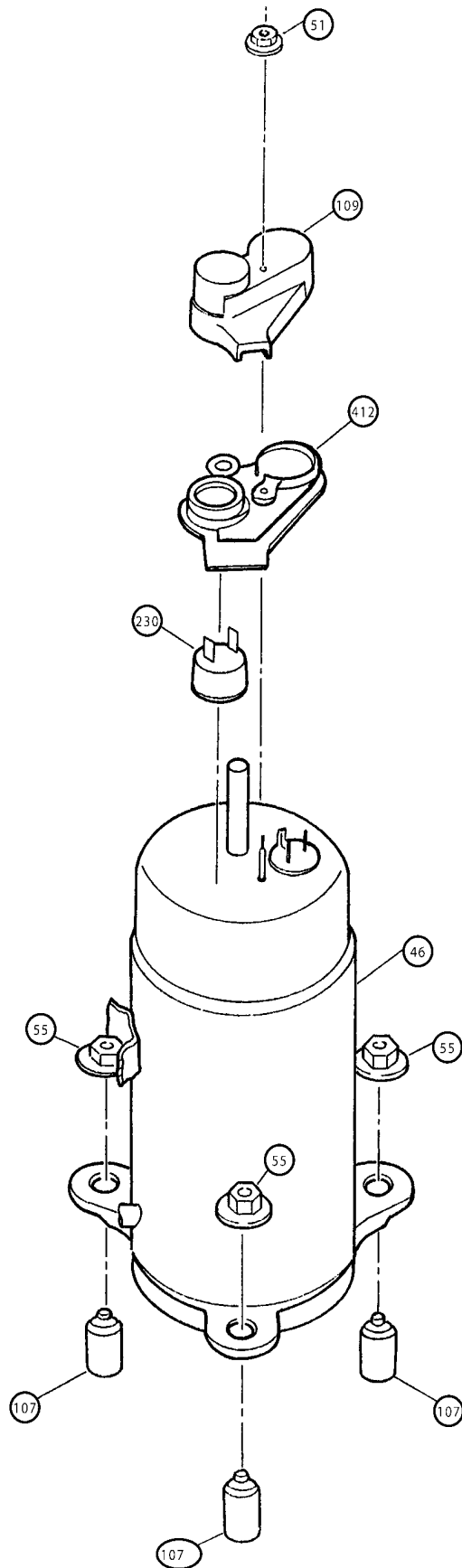
Models : AOY19ESAM2
 AOY24ESAM2
 AOH19ESAM2
 AOH24ESAM2



Models : AOY19ESAM2
AOY24ESAM2
AOH19ESAM2
AOH24ESAM2



Models : AOY19ESAM2
AOY24ESAM2
AOH19ESAM2
AOH24ESAM2



PARTS LIST

INDOOR UNIT

When you order parts, please make a photocopy of this page and fill the number of the parts in the "Order" column.

Ref. No.	Description	Part No.				Ord. Qty
		ASY9EMACW	ASY12EMACW	ASH9EMACW	ASH12EMACW	
34	Capacitor (Fan Motor)	9700468103	9700468103	9700468103	9700468103	
63	Front Panel Assy	9305656448	9305656448	9305656493	9305656493	
65	Flow Control Panel-Z	9305443017	9359231011	9305443017	9359231011	
69	Louver-A	9305415014	9305415014	9305415014	9305415014	
74	Air Filter	9305444014	9305444014	9305444014	9305444014	
108	Base	9309755017	9309755017	9309755017	9309755017	
109-1	Casing Assy	9306005078	9357736075	9306005078	9357736075	
122	Shaft Holder-B	9303066010	9303066010	9303066010	9303066010	
127	Drain Hose Assy	9305550029	9305550029	9305550029	9305550029	
146	Evaporator Assy	9363321012	9363972016	9363321012	9363972016	
151	Control Box	9305448036	9305448036	9305448036	9305448036	
158	Connecting Pipe Assy	9364444000	9363973006	9364444000	9363973006	
164	Fan Motor Assy-IN	9306451011	9306451011	9306451011	9306451011	
169	Cross-flow Fan Assy	9307836015	9307836015	9307836015	9307836015	
178	Motor Cushion-B	9306274009	9306274009	9306274009	9306274009	
184	Thermistor Spring	313104262701	313104262701	313104262701	313104262701	
185	Cord Clamp	9305940004	9305940004	9305940004	9305940004	
195	Clamp SKB-100	313361275805	313361275805	313361275805	313361275805	
196-2	Clamp SKB-150	313035356905	313035356905	313035356905	313035356905	
233	Power Transformer	9701565023	9900028015	9701565023	9900028015	
236	Controller PCB Assy	9702479169	9702889272	9702479169	9702889272	
240	Remote Control Unit	9307113048	9307113048	9307991042	9307991042	
281	Clamp Metal (Pipe)	9306833010	9306833010	9306833010	9306833010	
282	Wall Cap-B (Accessory)	313714296205	313714296205	313714296205	313714296205	
323	Louver-B	9305597017	9305597017	9305597017	9305597017	
385	Indicator PCB Assy	9701364213	9701364213	9701364213	9701364213	
401	Wall Hook Bracket	9309248014	9309248014	9309248014	9309248014	
440	Flow Control Panel-U	9306173036	9359230014	9306173012	9359230021	
652-1	Thermistor Holder Pipe	313714262805	313714262805	313714262805	313714262805	
687	Earth Terminal	9306483005	9306483005	9306483005	9306483005	
743	Remote Control Holder Case	9305642014	9305642014	9305642014	9305642014	
759	Intake Grill	9305995028	9305995028	9305441044	9305441044	
761	Side Cover-R	9305996025	9305996025	9305996018	9305996018	
762	Side Cover-L	9305437054	9305437054	9305437047	9305437047	
764	Drain Cap Assy	9304150008	9304150008	9304150008	9304150008	
767-1	Bottom Cover-A	9309801011	9309801011	9309801011	9309801011	
767-2	Bottom Cover-B	9309802018	9309802018	9309802018	9309802018	
780	Key Top (Slide Switch)	9303526002	9303526002	9303526002	9303526002	
815	Terminal-3P	9701955046	9701955046	9701955046	9701955046	
850	Window (Receiver)	9305439010	9305439010	9305439010	9305439010	
872	Indicator Case	9305978014	9305978014	9305978014	9305978014	
873	Lamp Cover	9305451012	9305451012	9305451012	9305451012	
874	Control Box Cover	9305977017	9305977017	9305977017	9305977017	
875	Power Supply PCB Assy	9702440213	9702440213	9702440213	9702440213	
876	Step Motor	9900030018	9900030018	9900030018	9900030018	
932	Outlet Cover	9305414017	9305414017	9305414017	9305414017	
960	Diffuser Assy	9306013011	9357746012	9306013011	9357746012	
961	Guard Clamp	9306332013	9306332013	9306332013	9306332013	
962-1	Guard Holder-L	9305753017	9305753017	9305753017	9305753017	
962-2	Guard Holder-R	9305752010	9305752010	9305752010	9305752010	
963	Fan Guard	9305751013	9305751013	9305751013	9305751013	
968	Relay PCB Assy EZ-097MHSE-K	9702443214	9702443214	9702443214	9702443214	
973	Gear Assy (w/Step Motor)	9310820018	9310820018	9310820018	9310820018	
974	Joint (Louver)	9305416011	9305416011	9305416011	9305416011	
976	Window (Indicator)	9305440016	9305440016	9305440016	9305440016	

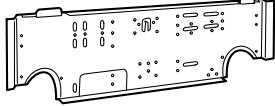
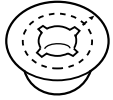
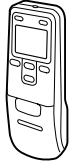

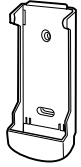
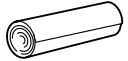
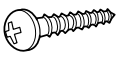

OUTDOOR UNIT

When you order parts, please make a photocopy of this page and fill the number of the parts in the "Order" column.

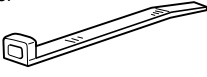


Ref. No.	Description	Part No.		Ord. Q'ty	Ref. No.	Description	Part No.		Ord. Q'ty
		AOY19ESAM2 AOH19ESAM2	AOY24ESAM2 AOH24ESAM2				AOY19ESAM2 AOH19ESAM2	AOY24ESAM2 AOH24ESAM2	
2	Fan Cover	9371187013	9371187013		84	Valve Cover	9359834014	9359834014	
4	Emblem "FUJITSU"	9359836018	9359836018		85	Valve Plate-B Assy, Painted	9361251021	9361251021	
4	Emblem "GENERAL"	313791088308	313791088308		107	Rubber Seat-A	9351813017	9351813017	
5	Cabinet-A, Painted	9359797043	9359797043		109	Terminal Cover (For Comp.)	313346059604	9351920012	
6	Cabinet-C, Painted	9359825029	9359825029		117-3	Hexagon Nut (Spring Lock Washer)	301721180114	301721180114	
9	Cabinet-B, Painted	9359824022	9359824022		128-1	Rubber (Discharge Pipe)	313155086308	313155086308	
12	Base Assy, Painted	9359813019	9359813019		149	Water Seal Plate	9359841029	9359841029	
13-1	3-Way Valve	9363099003	9363596007		185	Rubber Bushing	313005066051	313005066051	
14-1	2-Way Valve	9363098006	9363098006		187	Clamp No.1219	313361271706	313361271706	
15	Dryer Assy	9360818041	9360818041						
16	Condenser Assy	9363089004	9363089004		218-2	Power Relay	9363083002	9363083002	
18-1	Suction Pipe-A	9364815008	9363591002		230	Overload Relay	9363091007	9363648003	
26	Compressor Cover	9363111002	9363111002		328	Compressor Plate Assy	9359830016	9359830016	
29	Separate Wall	9359805014	9359805014		334	Suction Pipe-B	9364814001	9360830029	
32-4	Control Box Metal-D	9361247000	9361247000		401	Terminal-2P	9701971015	9701971015	
32-5	Control Box Metal-E	9361248007	9361248007		412	Terminal Gasket (For Comp.)	313346233304	9351921019	
32-6	Control Box Metal-F	9361249004	9361249004		450	Discharge Pipe-A SA	9360829023	9360829023	
34	Capacitor (Fan Motor)	9703306051	9703306051		450-5	Discharge Pipe-B SA	9360831026	9369540011	
35	Control Box Insulation-H	9361521001	9361521001		477	Bell Mouth	9359809012	9359809012	
37	Running Capacitor	9704436016	9704436016		527	Protective Net (Condenser)	9359845010	9359845010	
38	Capacitor Band Metal	9352123009	9352123009		620	Inlet Pipe (Condenser)	9363593006	9363593006	
39	Propeller Fan	9359837015	9359837015		653-1	Capscrew (Fan Motor Fixing)	9385089020	9385089020	
41	Fan Motor Induction-OUT	9600832011	9600832011		734	Top Plate, Painted	9359799023	9359799023	
45-3	Motor Bracket A	9369627002	9369627002		812	Grip	9352157004	9352157004	
45-4	Motor Bracket B	9371439013	9371439013		815-1	Terminal-3P	9358660027	9358660027	
45-5	Motor Bracket C	9369629006	9369629006		815-3	Terminal-8P	9358660119	9358660119	
45-6	Motor Bracket D	9369630002	9369630002		823-2	Fuse Holder	0500063024	0500063024	
46	Compressor Assy	9363090000	9363592009		824-4	Fuse	0600222529	0600222529	
51	Special Nut (For Comp.)	313199233602	313199233602		827	Capillary-A Assy	9360814067	9363611007	
55	Special Nut M8 (For Comp.)	313199233006	313199233006		828	Capillary-B Assy	9360815064	9363612004	
64	Cabinet-Left, Painted	9360806017	9360806017		982-1	Cord Clamp	9356857009	9356857009	
69-3	Hexagon Bolt (Cross recessed)	301210060360	301210060360		982-2	Cord Clamp-B	9356858006	9356858006	

STANDARD ACCESSORIES

INDOOR UNIT ACCESSORIES (Wall Mounted type)

Name and Shape	Q'ty	Part No.	
		ASY9EMBCW ASY12EMBCW	ASH9EMBCW ASH12EMBCW
Wall hook bracket 	1	9309248014	
Wall cap-B 	1	313714296205	
Remote control unit 	1	9307979040 (AR-DB4)	9307991042 (AR-DB4)
Battery (penlight) 	1 set	0600185534	
Remote control unit holder 	1	9305642014	
Cloth tape 	1	9308117007	
Tapping screw (big) (φ4 x 20) 	8	301141164200	
Tapping screw (small) (φ3 x 12) 	2	0700019036	

OUTDOOR UNIT ACCESSORIES

Name and Shape	Q'ty	Part No.
Binder 	2	312300787605
Putty 	1	303020200114
Hexagon wrench 	1	9351228019

